



YOU CAN DO MORE BECAUSE WE MAKE IT EASY FOR YOU

LUCID - CUSTOM DESIGN SERVICES

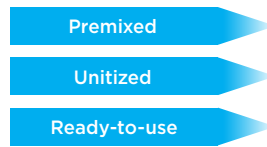


EMPOWER
life-changing decisions.

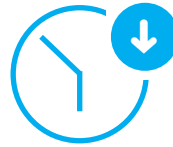


DO MORE RESEARCH AND TESTING WITH LESS COCKTAILING AND BENCHWORK

LUCID* Custom Design Services (CDS) offers customer specific panels in a pre-mixed, unitized, ready-to-use format, reducing demonstrated sources of variability, thus streamlining your workflow while increasing your assay consistency.



Reduced hands-on-time



Our panel design experts can create an optimized panel that clearly meets your research requirements.

LUCID is also available in Microplate format

Now, even high-throughput flow cytometry laboratories can benefit from the advantages that dry-reagent cocktails are provided in microplates without needing to adapt their workflow to the tube formats.

The microplates are available in shallow and deep well options with barcodes for easy traceability.



WHAT IS DURA INNOVATIONS?



D_{RY}

- A uniform dried reagent layer at the bottom of the tube.
- No refrigeration is required and can be stored at room temperature (18-30 degrees C).

U_{NITIZED}

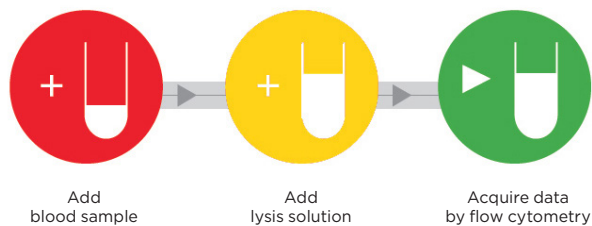
- Custom panels are supplied in a single-use cocktail per tube/ plate.
- Tubes are ready for addition of sample.

R_{EAGENT}

- Suitable for drying conjugated antibodies, stabilizing them for room temperature (18-30 degrees C) storage.
- Tube-to-tube and batch-to-batch consistency.
- Cocktails can include enumeration beads for absolute cell counting (optional).

A_{SSAYS}

- Conjugates are suitable for flow cytometry.
- Manufactured for multiple types of assays.



For DURA Innovations products, you can also save money by reducing reagent waste. Contact your local Beckman Coulter sales rep to understand the wastage for your specific lab to create a detailed cost-savings report specifically for your lab.

ORDERING INFORMATION

LUCID options

Whether you need a different conjugate of one of our labeled human antibodies or a custom conjugation of one of your own—we can provide affordable options for all your experimental design requirements:

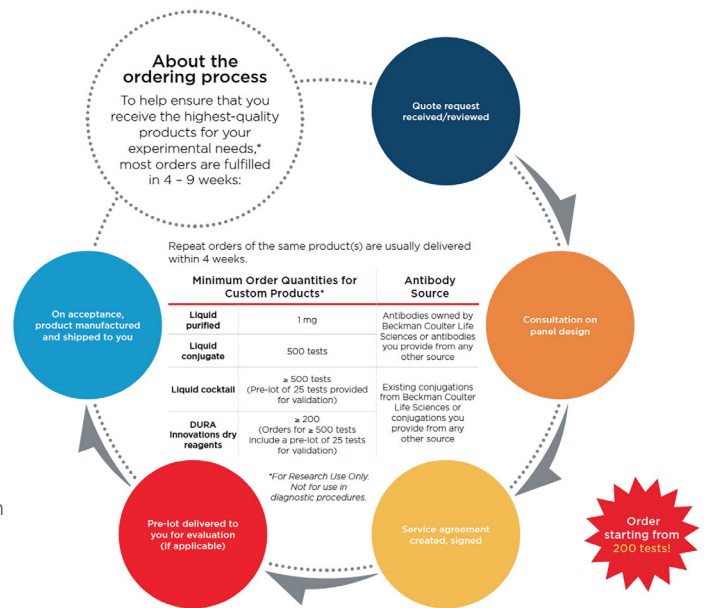
- Single-color conjugations.
- Optimized multi-conjugate combinations.
- Bulk purified antibodies (you specify concentration and buffer).
- One set of Compensation kit to be provided for every 50 tests order.

Microplate formats

- Two 96-well plates per kit: 2 pouches of 1 microplate each and 1 pouch with Compensation Kit.
- 2 to 15 conjugates per panel.
- Same reagent panel across all wells.

All LUCID products are stable at room temperature (18°C – 30°C).

All LUCID products (in DURA Innovations format) have a warranty of 18 months from the date of manufacturing.



**Customization does not need to be expensive and time-consuming.
Find out how much we can do for you.**

Frequently asked questions

How long does it take to get a custom order?

Typical delivery times are about 9-12 weeks, however this period can be shorter or longer depending on the complexity of the order and the availability of conjugates internally or with third parties.

Will we get a pre-lot of our custom product to evaluate?

Yes. With a minimum order of 500 tests, you'll get a pre-lot of 25 tests for evaluation.

Will we receive a compensation kit with our order?

Yes. We include a compensation kit with every 50 tests, regardless of order quantity.

Can my custom product be labeled as CE/ASR?

No. Our CDS products are designed and manufactured in facilities whose quality systems have been certified as compliant with the ISO 9001 quality system standards. However, unlike our ASR and CE-IVD products, our CDS products are intended for research use only, and are not intended to be used in diagnostic procedures.

Can I obtain sodium azide-free formulations?

Yes. Purified antibodies can be formulated without azide for use in conjugates and functional studies, as they can be stored frozen to minimize risk of microbial contamination. Or conjugates can be formulated at high concentrations with low amounts of sodium azide.

Is there a performance difference between liquid reagents and dry DURA Innovations reagents?

No. The proprietary DURA Innovations process yields a dry, stable product that delivers similar or equivalent performance as a liquid product.



Contact your sales representative or visit

<https://www.beckman.com/reagents/coulter-flow-cytometry/custom-services>

to request a quote



* For Research Use Only. Not for use in diagnostic.

© 2020 Beckman Coulter, Inc. All rights reserved. Beckman Coulter, the stylized logo, and the Beckman Coulter product and service marks mentioned herein are trademarks or registered trademarks of Beckman Coulter, Inc. in the United States and other countries.

For Beckman Coulter's worldwide office locations and phone numbers, please visit "Contact Us" at [beckman.com/home](https://www.beckman.com/home)

FLOW-6944SB05.20