



THE FIRST OF ITS KIND.

FIRST FDA CLEARED IVD TEST TO AID IN THE DIFFERENTIAL DIAGNOSIS OF LEUKEMIA AND LYMPHOMA* BY FLOW CYTOMETRY.

ClearLLab - Results you can count on.



EVERY
event matters.



IDENTIFY MAJOR HEMATOLYMPHOID AND MYELOID CELL POPULATIONS

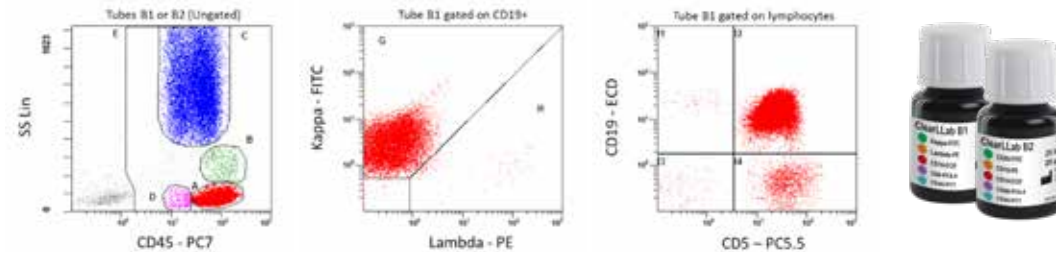
EMPOWER YOUR LAB'S WORKFLOW: ACCURACY AND RELIABILITY

ClearLLab Reagents

B-cell Tubes 1 and 2

Examples of dot plots from a mature B-cell neoplasm sample for ClearLLab B1 and B2 reagents.

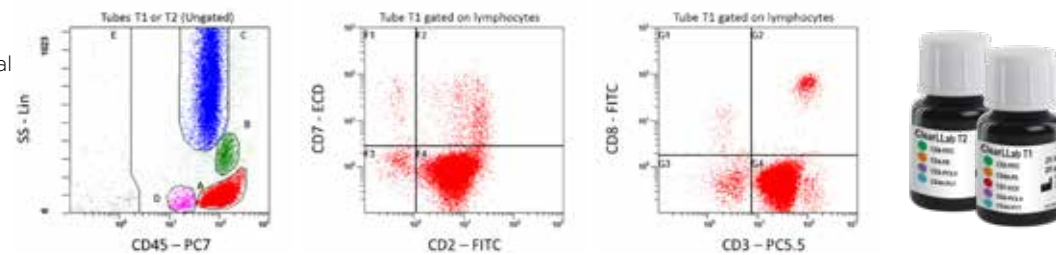
NOTE: not all histograms shown.



T-cell Tubes 1 and 2

Examples of from a mature T-cell neoplasm peripheral blood sample for ClearLLab T1 and T2 reagents.

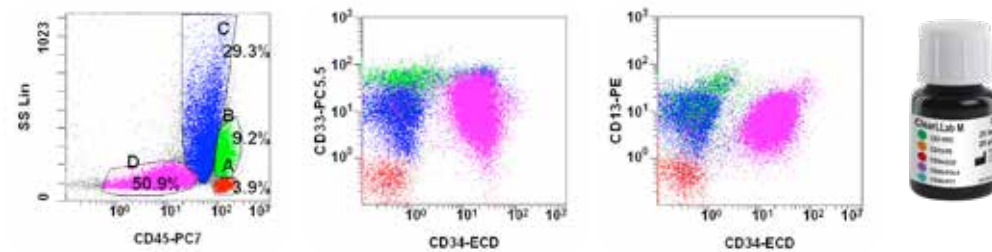
NOTE: not all histograms shown.



Myeloid Tube

Examples of from an Acute Myeloid Leukemia (AML) bone marrow sample for ClearLLab Myeloid reagents.

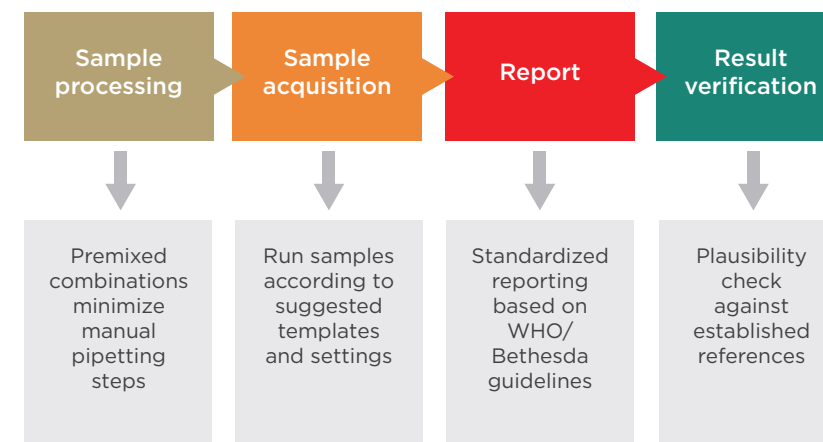
NOTE: not all histograms shown.



The ClearLLab reagents are intended for in vitro diagnostic use as a panel for qualitative identification of cell populations by multiparameter immunophenotyping on an FC 500 flow cytometer. These reagents are used as an aid in the differential diagnosis of hematologically abnormal patients having, or suspected of having the following hematopoietic neoplasms: chronic leukemia, acute leukemia, non-Hodgkin lymphoma, myeloma, myelodysplastic syndrome (MDS), and/or myeloproliferative neoplasms (MPN). The reagents can be used with peripheral whole blood collected in EDTA (K2 and K3), Acid Citrate Dextrose (ACD), or Heparin, bone marrow collected in K2EDTA, Acid Citrate Dextrose, or Heparin, and lymph node specimens. Interpretation of the results should be confirmed by a pathologist or equivalent professional in conjunction with other clinical and laboratory findings.



CLEARLLAB: WORKFLOW EFFICIENCY



How were the ClearLLab Reagents defined?

The 2006 Bethesda International Consensus Conference and the 2016 WHO guidelines recommended marker combinations that we used to compose antibody panels directed against B, T, and Myeloid lineage antigens intended to identify relevant leukocyte surface molecules.

What antibodies are in ClearLLab Reagents?

ClearLLab provides 2 T-cell vials, 2 B-cell vials and a Myeloid vial, each consisting of pre-mixed 4 to 5-color cocktails. Together this totals to 18 markers as directly conjugated antibodies.

How does ClearLLab help your lab?

ClearLLab Reagents are useful as an aid in the differential diagnosis of patients with certain abnormal hematology results and/or presence of blasts in the blood stream, bone marrow and/or lymph node specimens. The results are intended to be used with further clinical findings and laboratory tests.

Flow cytometric analyses are an integral part of the standard of care in hematopathology. ClearLLab Reagents aid in the characterization of hematolymphoid neoplasia by providing a comprehensive combination of conjugated antibody cocktails.

Highlights

IVD: Minimize your lab's validation work.

Enhanced workflow: No manual antibody cocktail preparation.

Consensus aligned: Ensures you work according to international guidelines.

Features

Small kit size: adapt your inventory to actual demand with 25 tests / vial.

Versatile: ClearLLab can be used with peripheral whole blood (K2EDTA, K3EDTA, ACD, or Heparin), bone marrow (K2EDTA, ACD, or Heparin) and lymph node specimens.

Identify major cell populations with ClearLLab's 5-combination, 18-marker cocktails.

ClearLLab Reagents

For clinical labs who need accuracy, reliability, and to improve their workflow with a standardized kit and protocol, Beckman Coulter introduces the first preformulated, IVD antibody cocktails for leukemia and lymphoma* immunophenotyping. ClearLLab delivers cost savings and reduces the need for extensive validation, ultimately reducing the potential for errors and increasing confidence in results.

PN	REAGENT	488 nm				
		FITC	PE	ECD	PC5.5	PC7
B66807	T-cell Tube 1 (T1) 25 tests	CD2	CD56	CD7	CD5	CD45
B66808	T-cell Tube 2 (T2) 25 tests	CD8	CD4	-	CD3	CD45
B66809	B-cell Tube 1 (B1) 25 tests	Kappa	Lambda	CD19	CD5	CD45
B66810	B-cell Tube 2 (B2) 25 tests	CD20	CD10	CD19	CD38	CD45
B66812	Myeloid Tube (M) 25 tests	CD7	CD13	CD34	CD33	CD45

Five individual reagents allow for more flexibility and adaptation to your laboratory's needs.



www.beckman.com/ClearLLab-IVD

For in vitro
Diagnostic Use



*Non-Hodgkins lymphoma only

© 2017 Beckman Coulter, Inc. All rights reserved. Beckman Coulter, the stylized logo and the Beckman Coulter product and service names mentioned herein are trademarks or registered trademarks of Beckman Coulter, Inc. in the United States and other countries.

For Beckman Coulter's worldwide office locations and phone numbers, please visit "Contact Us" at beckman.com

FLOW-3196SB12.17