



Get out of the lab more...get more out of the lab

With Beckman Coulter's New Instrument Scheduler Software Application

In a shared-device environment, you need to know your centrifuge is going to be available when you need it. When you're up against a tight timeline and need to get your samples spun, you don't have time to wait hours for someone else to finish their job, or worse yet, to take your spot in line at the last minute.

Maximize Your Lab Time

Beckman Coulter's new Centrifuge Scheduler Software enables the centrifuge to be an equally shared resource everyone can use. That results in more productive time in the lab, and less stress for your sample prep. The Centrifuge Scheduler app allows users to check availability, schedule, and control and monitor centrifuges from anywhere on campus through the MobileFuge app on smartphones or tablets. You can reserve the centrifuge without having to physically be at the machine. This saves you time and makes you more efficient throughout your day.

The Centrifuge Scheduler Software App works with the Optima XPN and Avanti JXN series centrifuges to allow you to schedule and reserve time on the machine from virtually anywhere. Our login system reserves your spot, and prevents others from setting up their own session moments before yours.

Don't Lose Your Place in Line

An icon notifies users at the centrifuge of a current or pending reservation and prevents them from jumping in line in front of you. The software also allows users throughout campus to check availability and control and monitor the centrifuge from smartphones or tablets. Add this application to existing Optima XPN or Avanti JXN centrifuge!

In addition, the MobileFuge app (iOS and Android) will be updated to be able to support scheduling of instruments if the listed instruments have the scheduling app.

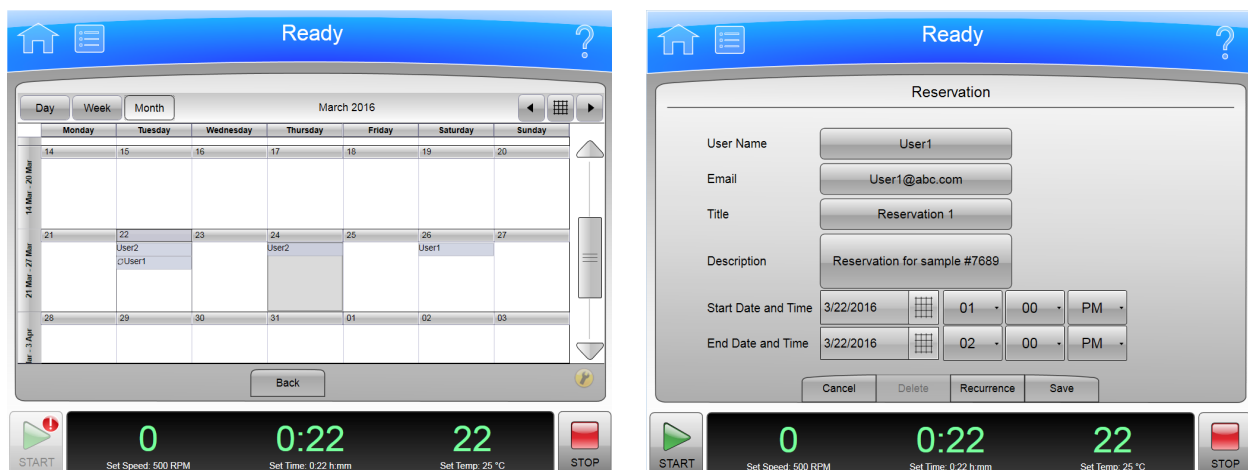


Figure 1. Screen Shots for Illustrative Purposes

Software Features

Reservations are on a first-come, first-served basis. Any attempt to reserve an instrument that overlaps an existing reservation will cause an error message to be displayed, and the app will refuse to complete the reservation.

Make reservations up to 1 year from the current date

Reservations can span hours, days, weeks, and months

Make reservations in 15 minute increments

Create recurring reservations (daily, weekly, or monthly)

The application supports the following languages, English, French, Italian, German, Spanish, Japanese, Russian, Korean, and simplified Chinese

If a diagnostic occurs that causes the run to overlap with a reservation, then the software will provide an email to the reservation owner, indicating their reservation will be delayed.

User Configuration Options

There are two configurable options for managing your centrifuge users

Reservations

To make a reservation, users select the scheduler icon. They will then choose the view option (either day, week, or month), navigate to desired time or day, enter their user name, email, and title to reserve the centrifuge run

Reservations User List

The system administrators loads a list of valid users. Only those users will be able to make a reservation in the system

After the administrator has input the list of valid users, the instrument will only allow a user selection from that list

Reservations can only be modified by the reservation owner or the administrator

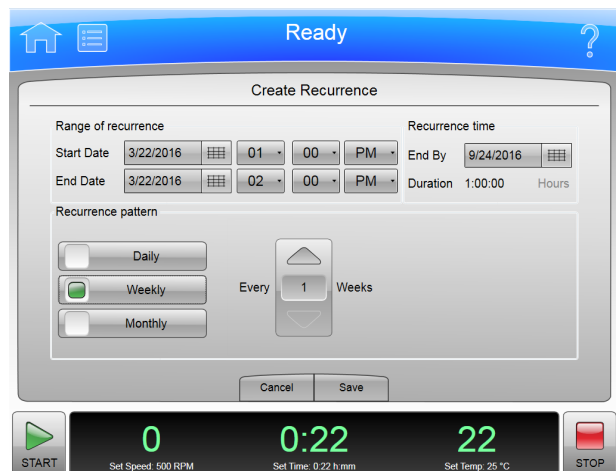
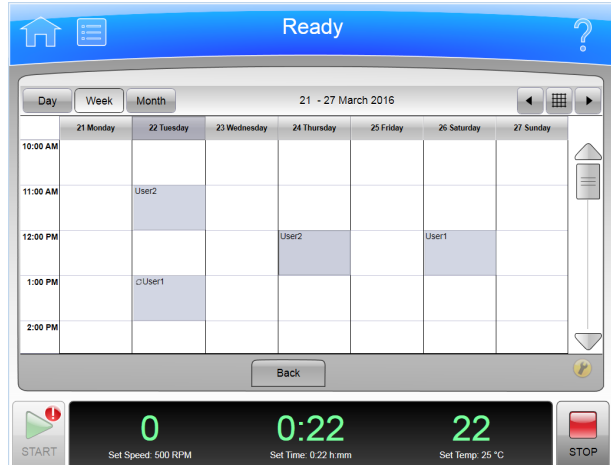
Administrative Features

The instrument administrator can select a configurable number of minutes to time out a reservation. If the unit is not used within a set number of minutes after the start of the reservation, the reservation will be automatically cancelled.

The administrator can select a configurable number of minutes for the display of a message before the start of a reservation, indicating that the instrument is reserved.

Only the administrator may override, delete, and modify reservations.

The scheduler can allow the administrator to select either an open reservation configuration, or limit reservations to the instrument's user list.



For additional questions read the IFU



© 2015 Beckman Coulter, Inc. All rights reserved.
Beckman Coulter, the stylized logo and the Beckman Coulter product and service names mentioned herein are trademarks or registered trademarks of Beckman Coulter, Inc. in the United States and other countries.

For Beckman Coulter's worldwide office locations and phone numbers, please visit "Contact Us" at beckman.com

CENT-1629DS04.16-A