



Increase Workflow Efficiency to Transform Your Lab

With a Biomek i3, i5 or i7 Automated Workstation

ACCELERATING
answers

 **BECKMAN
COULTER**
Life Sciences

Biomek: a trusted name in liquid handling automation since 1986

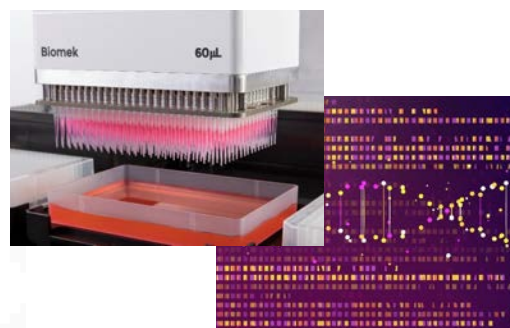
It's a name that took on even greater meaning in 2017, when we launched the game-changing **Biomek i-Series** workstations—the i5 and i7 models—which set a new standard in automation-enabled productivity in laboratories around the world.

We expanded the i-Series portfolio in 2025 with the compact Biomek i3 benchtop model, specially designed for new automation users and experienced professionals alike.

Today, automating your research workflows has never been easier.

Prepare to accelerate a wide range of applications

- Cell transfection
- Nucleic acid extraction
- ELISA
- NGS library prep
- Plasmid DNA prep
- Antibody cocktailing
- Mass spec sample prep
- Cell passaging/media exchange
- PCR/qPCR setup
- AMPure XP cleanup
- SPRIselect size selection
- Valita Titer assay



Accelerating results while maintaining high data quality

This can be your lab's competitive edge

Regardless of the application, a Biomek i-Series workstation will help eliminate tedious manual tasks so you can accomplish so much more in much less time.

Biomek i-Series Automated Workstations are synonymous with:

- **Efficiency**, to help you optimize productivity, increase walk-away time and learn more, faster
- **Simplicity**, so you can focus more on science and less on managing your lab instruments
- **Reliability** and support, to help maximize instrument uptime and minimize interruptions in your research
- **Adaptability**, so the technology you invest in today can grow with your lab's needs, not grow obsolete

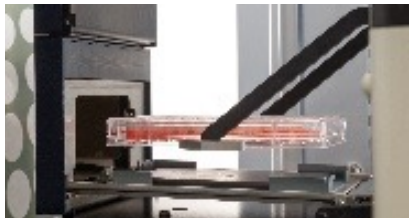


The efficiency benefits of Biomek i-Series workstations come from the unique synergy between our

- Hardware
- Software
- Accessories
- Consumables
- Service/support

Designed to simplify automation of your most demanding research workflows

Regardless of the size and scope of your lab, there's a Biomek i-Series instrument designed with your needs in mind. Built to deliver uncompromising precision, flexibility and workflow efficiency, **all Biomek liquid handlers include:**



An open-platform design—with access from at least 3 sides of the instrument—for easy on- and off-deck integration of the additional devices your workflows require (see page 6 for more information)



A rotating labware gripper to smoothly and efficiently move microplates, racks, tip boxes, reservoirs, lids and more



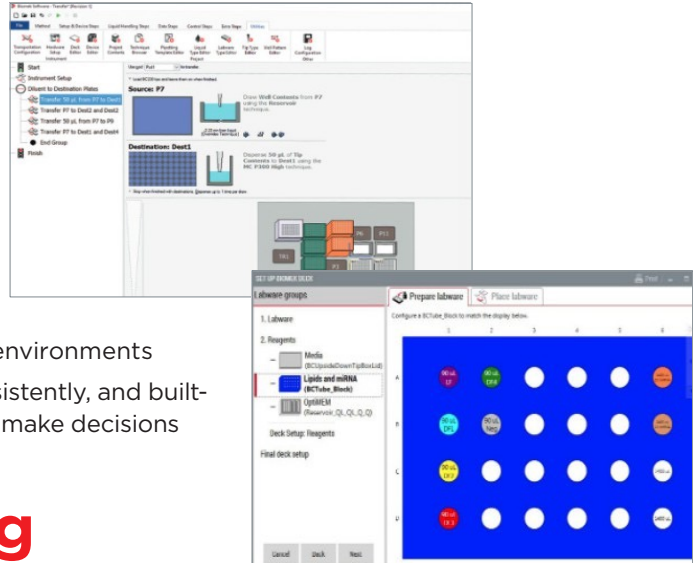
0.5 - 1,000 μ L pipetting range

Industry-leading Biomek i-Series software delivers powerful workflow intelligence

The latest version of customer-acclaimed Biomek i-Series software maximizes ROI by giving you unprecedented control over your liquid handler.

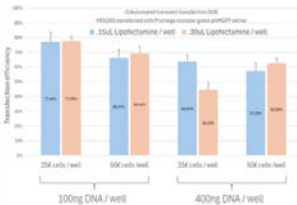
Biomek software provides:

- An intuitive, icon-based drag-and-drop interface
- Full control over complex tip movements that mimic manual pipetting
- Flexibility to integrate third-party devices with full software control
- Support for 21 CFR Part 11 compliance in regulated environments
- Confidence that your samples are being treated consistently, and built-in data reporting that enables use of method data to make decisions



Automation enabling broad applicability

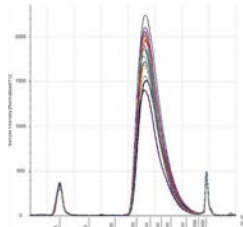
Scalable automation enables the generation of robust, high-quality data across diverse application types by standardizing workflows, minimizing human error, and ensuring reproducibility at scale. Whether applied to genomics, drug discovery, or clinical research, the Biomek i-Series family of automated systems can adapt to varying throughput demands while maintaining consistent performance.



The Biomek i3 benchtop liquid handler effectively automates lipofection-based transient transfection workflows, enabling reproducible, multivariate experiments with minimal hands-on time.



Reference: Automated Cell Handling and Lipofection-based transient transfection design of the experiments (DOE) on the new Biomek i3 benchtop liquid handler. 2025-GBL-EN-108611v1



The Biomek i5 MC automates KAPA EvoPlus library prep for Illumina sequencing with customizable protocol parameters. This flexible workflow supports optimization across sample input, enzymatic steps, and cleanup conditions for efficient, high-quality library generation.



Reference: Automated Next-Generation Sequencing Sample Preparation Methods. 2023-GBL-EN-104634-V2

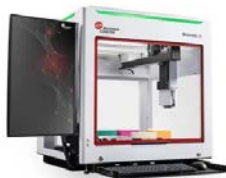


The Biomek i7 SISCAPA assay workflow is adaptable for varying sample sizes and allows key steps to be performed offline. This flexibility can significantly reduce total processing time, improving overall efficiency.



Reference: Automating Stable Isotope Standards and Capture by Anti-Peptide Antibodies (SISCAPA®) Kit in the Biomek i7 Hybrid Automated Workstation for AEMS analysis. 2024-GBL-EN-106812-V1

Choose the Biomek i-Series Workstation that fits your needs today—and tomorrow



| | Biomek i3 Workstation <i>Smart. Small. Powerful.</i> | Biomek i5 Workstation <i>To level up your research.</i> | Biomek i7 Workstation <i>For maximum Biomek power.</i> |
|---|--|--|--|
| Dimensions (W/D/H, door closed) | 73.2 cm x 78.5 cm x 82.6 cm 28.8" x 30.9" x 32.5" | 112 cm x 81 cm x 104 cm 44.09" x 31.89" x 40.94" | 170 cm x 81 cm x 104 cm 66.93" x 31.89" x 40.94" |
| Throughput capacity | Low to medium | Medium to high | High |
| Deck capacity | 15 pipettable & 5 flex positions | 25 pipettable positions | 45 pipettable positions |
| Pipetting head options | 1 fixed 8-channel pipetting pod | <ul style="list-style-type: none"> • 1 Span-8 pipetting pod • 1 multichannel (96/384) pipetting head | <ul style="list-style-type: none"> • 1 Span-8 pipetting pod • 1 multichannel (96/384) pipetting head • 2 multichannel (96/384) pipetting heads • Hybrid: multichannel (96/384) pipetting head + Span-8 pipetting pod |
| Pipetting volume range (µL) | 1 - 1,000 µL | 0.5 - 1,200 µL or 0.5 - 5,000 µL (depending on pipetting head used) | |
| Biomek Software | | <ul style="list-style-type: none"> • Biomek Method Launcher • SAMI EX scheduling software* • Biomek PowerPack software* • DART 2.0 software* | |
| Automated deck framing | • | • | • |
| Windows 11 compatible | • | •• | •• |
| Multicolor status light bar | • | • | • |
| Internal LED light | • | • | • |
| Optional HEPA filtration | • | • | • |
| Deck camera system | • | • | • |
| Integrate other devices (on-/off-deck) | • | • | • |
| Guided labware setup | • | • | • |
| LIMS connectivity | • | • | • |
| Accommodates disposable pipette tips | • | • | • |
| Supports 21 CFR Part 11 compliance | • | • | • |
| 8-channel liquid level sensing | In development | • | • |
| 96-well multichannel pipetting head | | • | • |
| Light curtain safety feature | | • | • |
| Accommodates fixed tips (incl. septum piercing) | | • | • |
| Touchscreen monitor | • | | |
| UV-C light-enabled | • | | |

*Sold separately

**Upgradable for workstations manufactured after 2025



Learn more about the Biomek i3 Workstation



Learn more about the Biomek i5 Workstation



Learn more about the Biomek i7 Workstation

Automate your most sophisticated workflows with easy device integrations

Because your research might require much more than transferring liquid from one well to another, you can easily transform a standalone Biomek i-Series Liquid Handler into a **fully integrated, walkaway system** tailored to your unique requirements.

To that end, your team can collaborate with our **Access Solutions Group**.

This group of Beckman professionals, with 30+ years of experience, has created thousands of custom lab automation solutions using 400+ device drivers from 77+ third-party suppliers. (And we currently maintain 230+ of these device drivers so they're ready to use *immediately* for your automated system!)



We frequently integrate these devices with Biomek i-Series workstations:

- Barcode readers
- Labware feeders
- Thermocyclers
- Storage devices
- Plate shaking devices
- Microplate readers
- Peltier heating/cooling devices
- Robotic arms



Learn more about Biomek device integrations

Bring your workflows to life with Biomek i-Series labware & consumables

As liquid handling experts, we can also be your primary resource for the pipette tips, microplates, tubes, racks, reservoirs and other labware you need for your research.

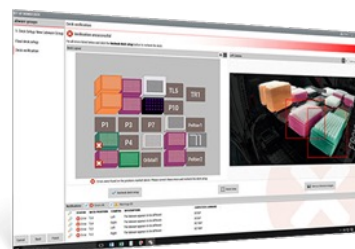
Only Biomek pipette tips are validated for use with Biomek i-Series workstations, which is why **Biomek software includes point-and-click options for color-coded Biomek tip racks**, as well as pipette definitions, techniques and templates.

Pipette tip options include pre-sterilized, non-sterile, conductive and non-conductive, as well as filtered tips.

What's more, Biomek pipette tips are certified to be free of:*

- RNase/DNase
- DNA (human & mouse)
- Pyrogen
- Endotoxins
- Trace metals

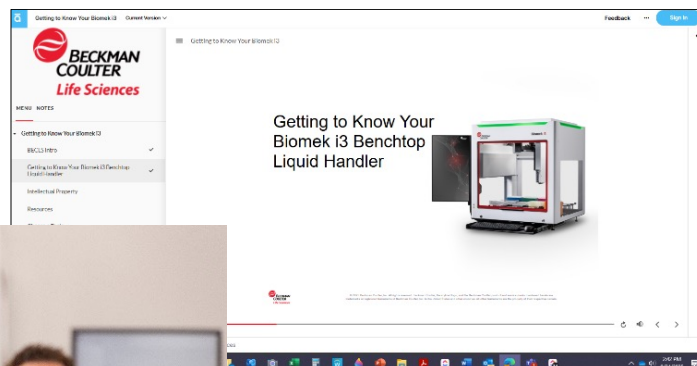
*Based on sample results below detectable limits



Learn more about Biomek consumables

Execute your workflows with confidence thanks to expert training and support

From online classes or instructor-led training to on-site application support – we’re committed to doing everything possible to ensure that you and your team can confidently operate your Biomek workstation, year after year.



Learn more about Biomek training options

We share your commitment to sustainable innovation

Together with Polycarbin, we’re working to divert lab plastics away from landfills and incinerators, keeping materials within the supply chain for recycling and reuse. Biomek tips, racks and rack covers are molded from recyclable polypropylene resin, and Biomek tip packaging is comprised of 100% recyclable corrugated fiberboard.

Please contact your Beckman Coulter Life Sciences sales representative for more details about our recycling solution.





Accelerating Answers to Your Important Questions

With a relentless mission to empower those seeking answers to life's important scientific questions, we're a preferred laboratory partner providing automation and innovation solutions for centrifugation, flow cytometry, genomics, particle analysis and liquid handling workflows.

With a legacy dating back to 1935, our technologies reduce manual laboratory processes and can provide greater speed, accuracy, and advanced analytics to help you accelerate answers in your lab.

Start maximizing your lab's workflow efficiency today.
Visit beckman.com or contact your local representative.



Biomek Automated Workstations are not intended or validated for use in the diagnosis of disease or other conditions.

© 2026 Beckman Coulter, Inc. All rights reserved. Beckman Coulter, the stylized logo, and the Beckman Coulter product and service marks mentioned herein are trademarks or registered trademarks of Beckman Coulter, Inc. in the United States and other countries. Valita, Valita Titer and the ValitaCell logo are trademarks of ValitaCell Ltd. in the United States and other countries. ValitaCell is a Beckman Coulter Company. All other trademarks are the property of their respective owners.

For Beckman Coulter's worldwide office locations and phone numbers, please visit Contact Us at beckman.com
2025-GBL-EN-109053-v1

