

RELIABILITY IN THE THINGS YOU CAN'T SEE

BIOMEK SOFTWARE SOLUTIONS



ACCELERATED WORKFLOWS. Faster Discovery.



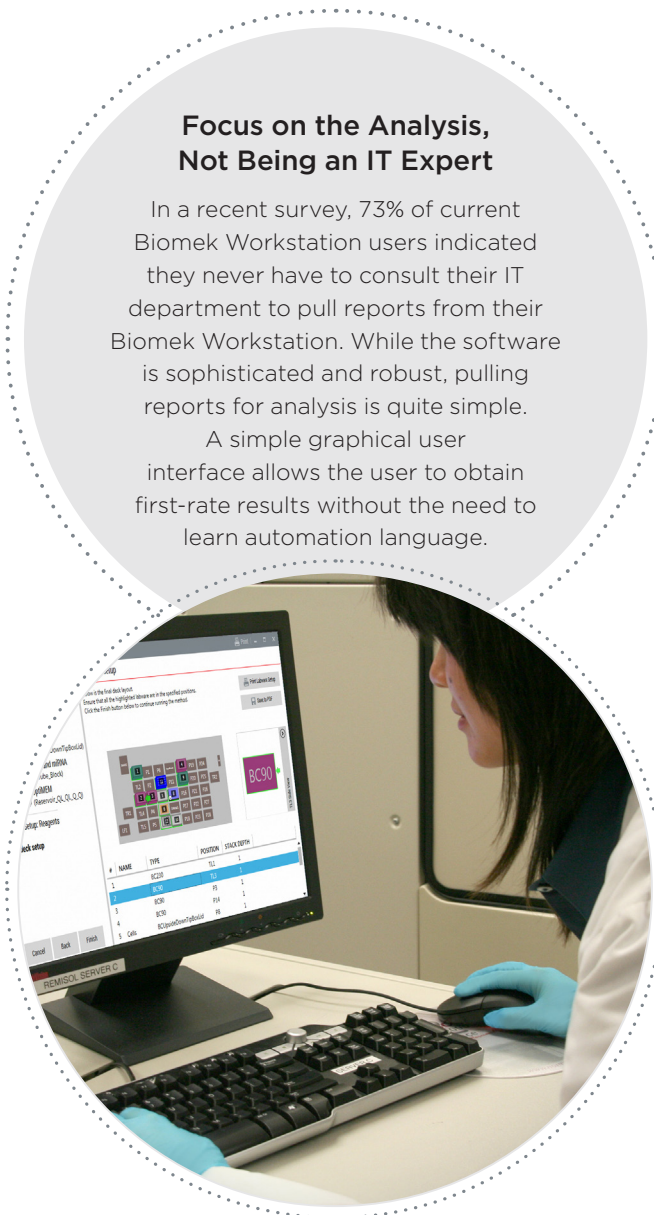
THE HEART OF BIOMEK AUTOMATION

Every time your sample moves, data moves. At Beckman Coulter, we offer solutions that simplify the complexity of sample and data handling through intelligent processing. Biomek Automated Workstations operate using data-rich Biomek software with robust software package add-ons to meet your individual workflow needs.

Biomek Software - Workflow Intelligence at Every Step

At the heart of every Biomek Automated Workstation is the software. Biomek software provides users with the confidence to know their samples are being treated consistently every run, and with every liquid transfer, the data from your samples is being stored. The latest version of our Biomek i-Series software maximizes ROI by giving you unprecedented control over your liquid handler.

- Define new deck layouts and labware placement for fast and easy method creation.
- Import/export methods.
- Toggle between applications such as plate replication, genomic DNA purification, and mass spec sample prep with ease.
- Vary runs without programming.
- Quickly select pipetting techniques, liquid types and deck layouts from drop-down menus.
- Validate new method setup and search for logic errors with the Method Validation feature.
- Achieve more with accurate run time, deck optimization, and accelerated method design features.
- Scan plates and import sample IDs based on plate barcodes.
- Track sample IDs throughout the run for maximum accuracy.
- Enable 21 CFR Part 11 compliance in regulated environments.
- The latest version of our Biomek software for i-Series instruments maximizes ROI by giving you unprecedented control over your liquid handler.



Focus on the Analysis, Not Being an IT Expert

In a recent survey, 73% of current Biomek Workstation users indicated they never have to consult their IT department to pull reports from their Biomek Workstation. While the software is sophisticated and robust, pulling reports for analysis is quite simple. A simple graphical user interface allows the user to obtain first-rate results without the need to learn automation language.

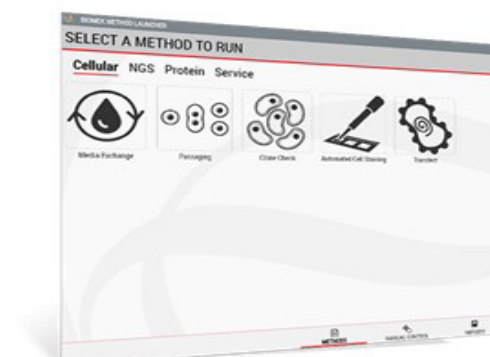
Biomek Method Launcher software

Biomek Method Launcher software enables users to select, set up, run, and track methods in a few simple mouse clicks.

1. Method Launch Pad user interface

Method Launch Pad user interface enables even novice users to harness the full power of Biomek liquid handlers.

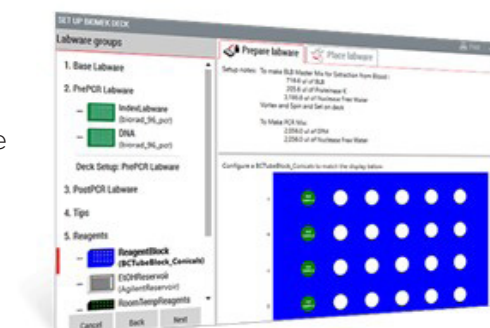
- Organize your methods and easily initiate ready-to-run methods using the “app-style” launch screen.
- Print a summary of your method, labware needs and reagent concentrations for offline prep work.
- Control methods via a web browser from virtually anywhere you happen to be by using the DeckOptix Final Check remote monitoring system.
- Review various levels of method data directly in Method Launcher software.



2. Guided Labware Setup Software

Guided Labware Setup software organizes details on labware and reagents, and leads you through setup, step-by-step.

- Receive clear instructions to help prepare master mixes and reagent plates.
- Set up the deck by labware groups and save your sensitive reagents and samples for last.
- Running extra samples today? Dynamic methods automatically adjust labware quantity/layout as sample quantity changes—without the need to reprogram.
- Get enhanced support for labware stacks and lidded labware.



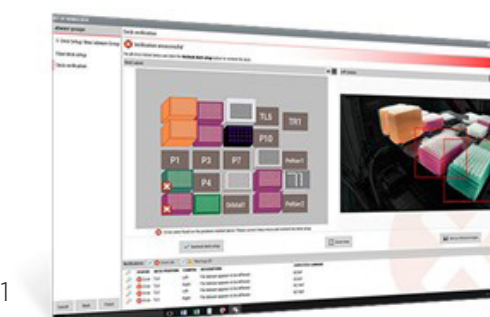
3. DeckOptix Final Check Remote Monitoring System*

DeckOptix Final Check remote monitoring system analyzes the deck for common setup errors and alerts you prior to the start of a run.

- Confirm labware is placed correctly on the automation deck.
- Verify use of the appropriate tip and plate types.
- Maximize walkaway time by avoiding method interruptions.

*i-Series Liquid Handlers only

All Beckman Coulter software is developed under ISO 9001 certified processes that include verification of the intended use. Biomek Software and SAMI software have features that enable labs to implement 21 CFR Part 11 compliance.

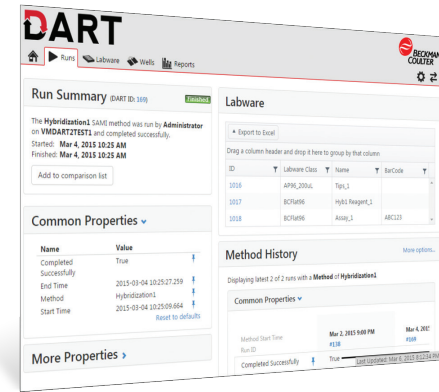


Biomek Software Add-ons

DART Software

DART software package gathers data and synthesizes runtime information from Biomek log files to capture each manipulation of the sample during the course of the method. DART software allows you to:

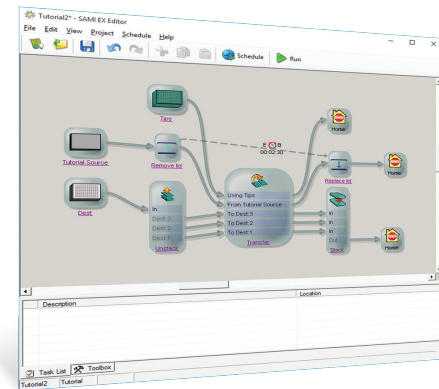
- Browse live and historical run data from any device using a networked internet browser.
- Reduce manual data integration.
- Leverage historical data on labware for enhanced method programming.
- Seamlessly port data between Biomek methods and individual liquid handlers.
- Generate data reports via MS Excel table and pivot views, and SQL views.
- Integrate with your Laboratory Information Management System.



SAMI EX Software

SAMI EX software is a flexible software package designed to provide complete automation and process control supporting a wide variety of applications across life sciences. SAMI EX software creates planned schedules with the benefits of an optimized, predictable static schedule.

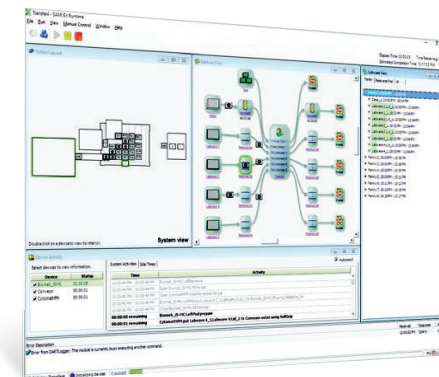
- Plans and schedules activities in a data-driven manner.
- Planning scheduler optimizes the sequence of workflow actions to ensure consistent timing.
- Devices can be integrated and use data at the plate and well level to make decisions.
- Save process time and control method variation with interleaving sub-processes.
- Use live data to drive methods/processes.
- Sophisticated error handling during method building and runtime.
- Gantt chart visually identifies bottlenecks and provides visual confirmation of workflow execution.



SAMI Process Management Software

SAMI Process Management software is a calendar organizational tool that allows the addition, monitoring, and planning of SAMI EX software methods and other events as part of user-defined processes.

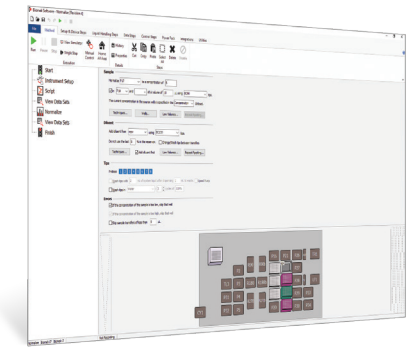
- Integrates long-running processes with many SAMI EX software methods into a centralized, visual workflow management tool.
- Multiple processes can be run simultaneously.
- All labware locations, data, and process information are stored and available in reports.



PowerPack Software

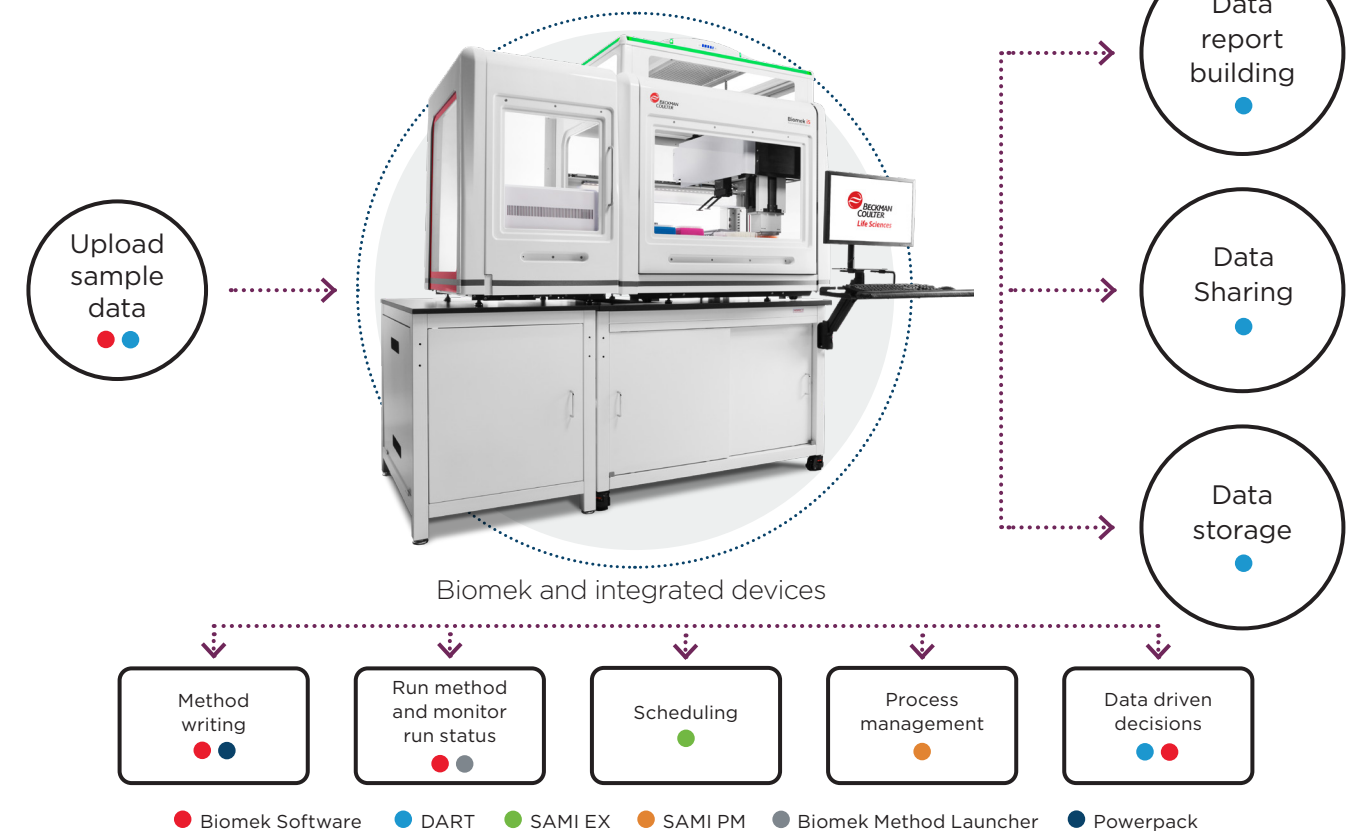
The Biomek PowerPack software features advanced tools to make programming data-intensive methods easy. The PowerPack software tools work together to bring new power and flexibility to the Biomek platform. Features of the PowerPack software include:

- The Normalization super step takes information about sample concentrations and normalizes the original wells or creates daughter plates at the requested concentration.
- The Hitpicking super step determines which wells to transfer and assigns sources to destinations and, along with data driven transfer, can perform the most challenging aspects of a hit picking protocol.
- The Project Synchronization Utility manages changes among projects on the automation PC, reporting on what changed, when, and by whom, and gives options for synchronizing these items.
- Other features such as HTML prompting, extended data reporting, additional alarm functionality, and more.



“I find Biomek software to be the most reliable and user-friendly software compared to competitive alternatives.”
Principal Research Investigator at a Biopharmaceutical company

Biomek software architecture



Choose Beckman Coulter for Benchmark Expertise and Innovation

For over 85 years, Beckman Coulter has driven innovation. We remain committed to shaping automation to fit seamlessly into your lab's workflow and to provide an optimal user experience. When you choose a Beckman Coulter instrument you receive the highest level of expertise, innovation, and quality assurance.

Contact your local Beckman Coulter sales representative.

beckman.com/contact-us



© 2021 Beckman Coulter, Inc. All rights reserved.

Beckman Coulter, the stylized logo, and the Beckman Coulter product and service marks mentioned herein are trademarks or registered trademarks of Beckman Coulter, Inc. in the United States and other countries.

For Beckman Coulter's worldwide office locations and phone numbers, please visit Contact Us at beckman.com
21.07.2189 AUTO