



## AMPure XP & RNAClean XP Reagents for DNA/RNA Cleanup

The protocol describes the cleanup of either DNA or RNA from enzymatic reactions. Starting input volumes of 50  $\mu$ L from sample is bound by SPRI beads. The bound nucleic acid and SPRI beads are captured with a magnet and the residual solution is transferred to waste. The beads are then washed to remove contaminants, and the nucleic acids are eluted from the beads in nuclease-free water. Here we describe the method set up on the Biomek i5 Nucleic Acid Cleanup Solution

### Extraction Process Workflow

#### AMPureXP reagent workflow



#### RNAClean XP reagent workflow



### Total Estimated Time

		AMPure XP	RNAClean XP
96 Samples	Hands-on Time	15 min	15 min
	<b>Total Time</b>	<b>58 min</b>	<b>58 min</b>
384 Samples (4 plates)	Hands-on Time	15 min	15 min
	<b>Total Time</b>	<b>1 hr</b>	<b>1 hr</b>

### Input Material, Reagents, Consumables

Description	Compatible Kit	Storage Temperature
DNA from enzymatic reaction	AMPure XP	4°C— -80°C
RNA from enzymatic reaction	RNAClean XP	4°C— -80°C

### Reagents

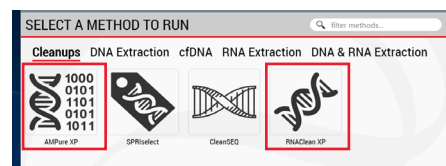
Description	Compatible Kit	Storage Temperature
AMPure XP	Beckman Coulter Life Sciences	4°C
RNAClean XP	Beckman Coulter Life Sciences	4°C
100% Ethanol (Molecular Grade)	User	Room Temp
Nuclease-free water (Molecular Grade)	User	Room Temp

## Consumable Plastics

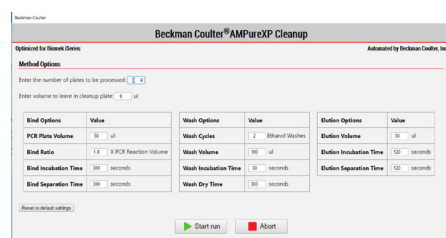
Description	Supplier	Quantity needed for 1 plate (96 Samples)	Quantity needed for 4 plates (384 Samples)
230µL PIPETTE TIPS, Sterile Filtered	Beckman	4	1
Hard-Shell® Thin-Wall 96-Well Skirted PCR Plates, clear wells	BioRad	8	2
RESERVOIR 96 WELL PYRAMID PP 287ML 25/CS	Agilent	3	3

## Method Overview

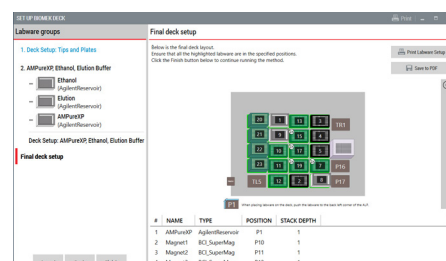
**Biomek Method Launcher (BML)** organizes methods into useful groups



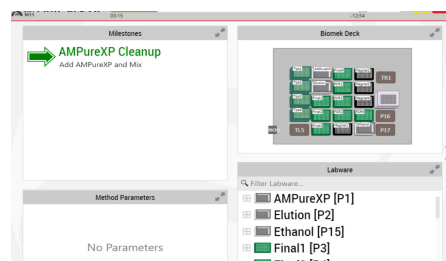
**Method Options Selector (MOS)** enables flexibility specific to your sample process batch size, process options and workflow customization



**Guided Labware Setup (GLS)** provides clear instructions to set up the instrument deck with calculated reagent volume and step-by-step instructions to prepare reagents based on options selected



**Run Status Screen (RSS)** shows progress of run, current activity and time to completion



For Research Use Only. Products are not intended or validated for use in diagnostic procedures.

Beckman Coulter makes no warranties of any kind whatsoever express or implied, with respect to this protocol, including but not limited to warranties of fitness for a particular purpose or merchantability or that the protocol is non-infringing. All warranties are expressly disclaimed. Your use of the method is solely at your own risk, without recourse to Beckman Coulter. Not intended or validated for use in the diagnosis of disease or other conditions. This protocol is for demonstration only, and is not validated by Beckman Coulter.

©2024 Beckman Coulter, Inc. All rights reserved. Beckman Coulter, the stylized logo, and the Beckman Coulter product and service marks mentioned herein are trademarks or registered trademarks of Beckman Coulter, Inc. in the United States and other countries. All other trademarks are property of their respective owners.

For Beckman Coulter's worldwide office locations and phone numbers, please visit Contact Us at [beckman.com](https://beckman.com)  
2023-GBL-EN-102912-v2

